

11:15 AM – 1:00 PM

**TRACK 2** expert

# Connect your DMS to the cloud

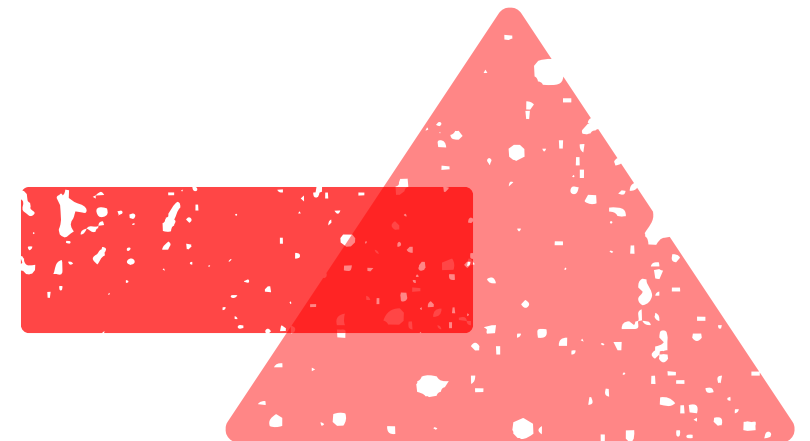
Baptiste Pattyn

## **WIFI**

SSID: Skyline Park

## **Presentation**

[aka.dataminer.services/cloud\\_workshop](https://aka.dataminer.services/cloud_workshop)



# Workshop overview

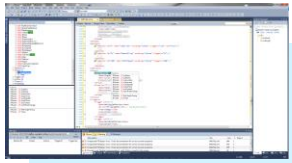
- What is the **DataMiner Cloud Platform**?
- What can you find on **DataMiner Community**?
- What is the **Cloud Connection**?
- How do you **connect a system** to the cloud? (*demo*)
- How do you **link your accounts**? (*hands-on*)
- What can you do in the **Admin App**? (*demo*)
- How do you deploy a connector through the **Catalog**? (*hands-on*)
- How to **share a Dashboard**? (*hands-on*)
- What can the **ChatOps** service be used for? (*demo*)
- What can you expect in the **future** for the **DataMiner Cloud Platform** services?

# DataMiner Cloud Platform

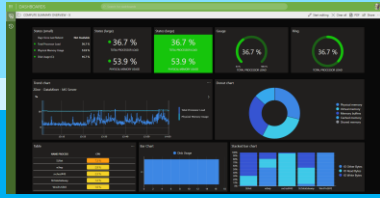
Introduction into the different services



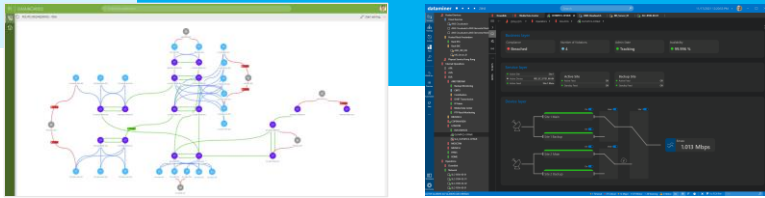
EMPOWERING AGILE TEAMS



DevOps



UNIFIED DATA-DRIVEN OPERATION



mail server  
ticketing  
inventory  
CRM  
ERM  
...

3<sup>rd</sup> party auxiliary systems

**dataminer**

unified secure digital twin

dataminer node



one unified open architecture data lake

ON THE GROUND

data collection & control plane

data collection & control plane



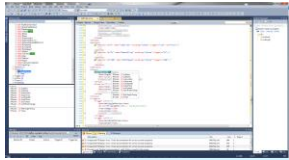
CLOUD

AWS Elasticsearch Service  
Azure Cassandra Managed instances

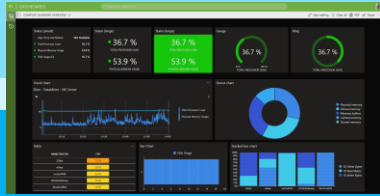




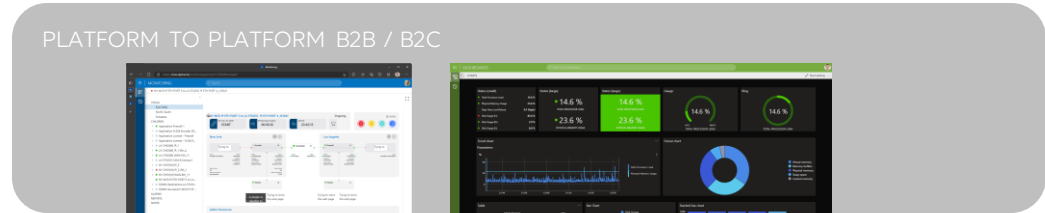
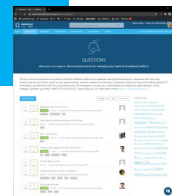
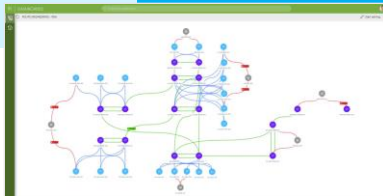
EMPOWERING AGILE TEAMS



DevOps



UNIFIED DATA-DRIVEN OPERATION



PLATFORM TO PLATFORM B2B / B2C



ChatOps

Remote Connect

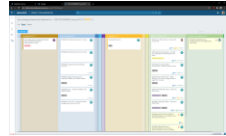
Share live dashboards



Community

Catalog

Project Collaboration



mail server  
ticketing  
inventory  
CRM  
ERM  
...

3<sup>rd</sup> party auxiliary systems

dataminer

unified secure digital twin



dataminer node

secured cloud connection

dataminer



one unified open architecture data lake



ON THE GROUND

data collection & control plane



CLOUD

data collection & control plane

AWS Elasticsearch Service  
Azure Cassandra Managed instances



# DataMiner Cloud Platform (DCP)

## Service overview



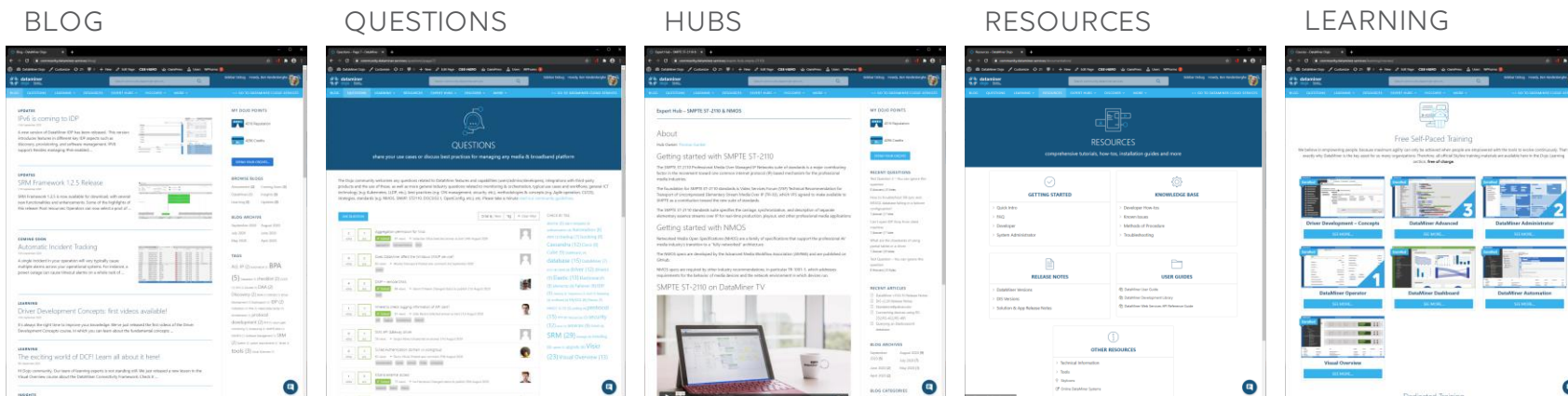
# DataMiner Community

[community.dataminer.services](https://community.dataminer.services)

# DataMiner Community

## Overview

- Open community – sharing knowledge & expertise
- Already 2500+ members
- Comprehensive new training materials
- Certification Program
- System Architecture & Scaling
- Use Cases
- ...





# DataMiner Community

## Login

- <https://community.dataminer.services>
- Login with corporate email
  - MS
  - LinkedIn
  - Google
  - Amazon
- Fill in email on the form
  - [aka.dataminer.services/InspireCloud](https://aka.dataminer.services/InspireCloud)



Blog - DataMiner Dojo

community.dataminer.services/blog/

dataminer **dojo** the smart community

Search community.dataminer.services

BLOG QUESTIONS LEARNING RESOURCES AGILE EXPERT HUBS DISCOVER MORE >> GO TO DATAMINER CLOUD SERVICES


---

**DATAMINER INTEGRATIONS / GENERAL**

### Interesting Integrations: 3 brand-new DataMiner Connectors

13th June 2022

A closer look at 3 brand-new upcoming DataMiner connectors the DataMiner dev teams are currently working: Akamai CDN, Huawei OceanStor 5000 series, NetInsight Nimbra Edge.





---

**GENERAL**

### Skyline Communications and Lutech Spa to roll out SDN-controlled media network for Rai Way

9th June 2022

At the outcome of the related public tender, Rai Way, the leading Italian network infrastructure and services operator, has selected Lutech Spa and its partner Skyline Communications for the rollout ...





---

**EVENTS**

### 5 reasons why you should come to DataMiner Inspire

8th June 2022

The biggest tech festival for and by DataMiner enthusiasts is back. And how! But why should you be interested to head down to picturesque Belgium? Let's find out!





---

**DATAMINER INTEGRATIONS / UPDATES**

### Connect your VMware Avi Vantage Controller to DataMiner

7th June 2022

The Avi Vantage platform helps ensure a fast, scalable, and secure application experience. Let's take a closer look at the VMware Avi Vantage Controller connector ...





---

**FOMO DOJO**

### DataMiner Dojo update – June 2022

1st June 2022



<https://community.dataminer.services/questions/> in the latest and greatest the

---

**MY DOJO POINTS**

2086 Credits

1671 Reputation

[SPEND YOUR CREDITS](#)

---

**BLOG CATEGORIES**

Amusement (6) Coming Soon (26)

DataMiner (4) DataMiner Integrations (4)

Events (24) FOMO DOJO (11)

General (44) Insights (42)

Learning (63) Solutions (7)

Tips & Tricks (1) Updates (113)

Use cases (5) Webinars (8)

---

**RECENT BLOGS**

Interesting Integrations: 3 brand-new DataMiner Connectors 13th June 2022

Skyline Communications and Lutech Spa to roll out SDN-controlled media network for Rai Way 9th June 2022

5 reasons why you should come to DataMiner Inspire 8th June 2022

---

**BLOG TAG CLOUD**

Agile (26) Agile Project

management (3) Automation (10)

# Blog

- Keep yourself up to date
- Continuous updates across relevant topics
- Communicating generously and transparently
- Categories
  - Coming Soon
  - Insights
  - Industry Updates
  - Product Updates
  - DataMiner
  - Learning
  - Amusement
  - ...

Resources - DataMiner Dojo

community.dataminer.services/documentation/

dataminer  
dojo  
the smart community

Search community.dataminer.services

BLOG QUESTIONS LEARNING RESOURCES AGILE EXPERT HUBS DISCOVER MORE >> GO TO DATAMINER CLOUD SERVICES

## RESOURCES

comprehensive tutorials, how-tos, installation guides and more

### Getting Started

- > Developer
- > FAQ
- > Quick Intro
- > Training Materials

### Knowledge Base

- > Developer How-tos
- > Known Issues
- > Methods of Procedure
- > Troubleshooting

### Other Resources

- > Technical Information
- > Tools
- 🔗 Online DataMiner Systems
- 🔍 Skylicons
- 📊 DataMiner Node Calculator

### Release Notes

- > DataMiner Versions
- > Class Library Versions
- > DIS Versions
- > Feature & App Versions
- 📄 Soft-launch options

### User Guides

- 🔗 DataMiner Development Library
- 🔗 DataMiner User Guide
- 🔗 DataMiner Web Services API Reference Guide

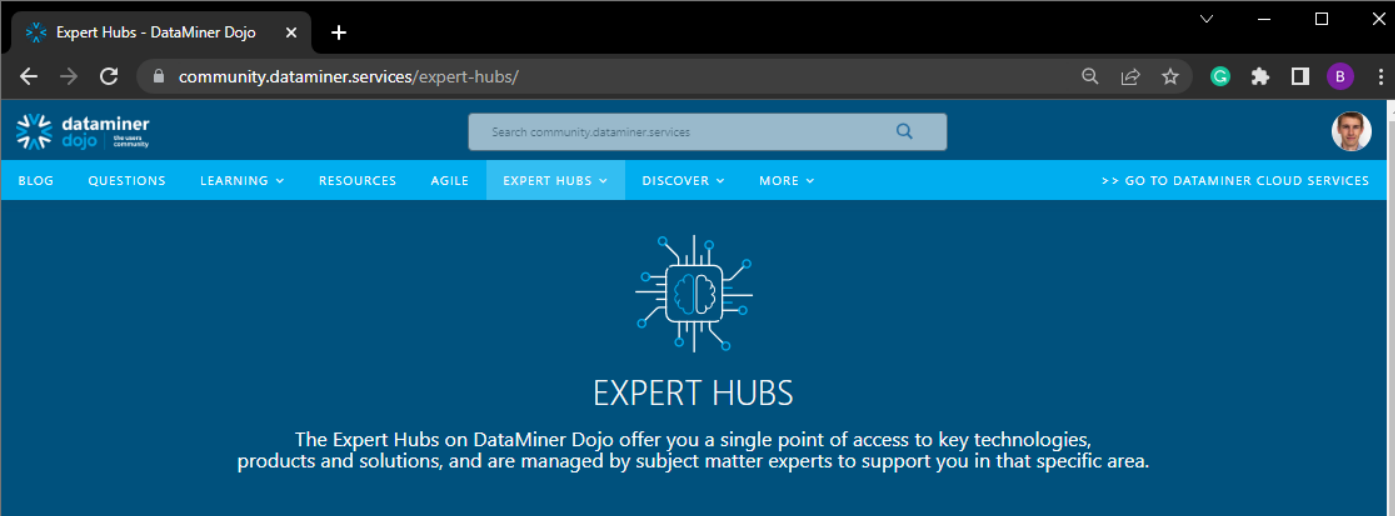
# Resources

- All formal documentation in one place
- Continuously updated and expanded
- Covering a broad range of topics

### OTHER RESOURCES

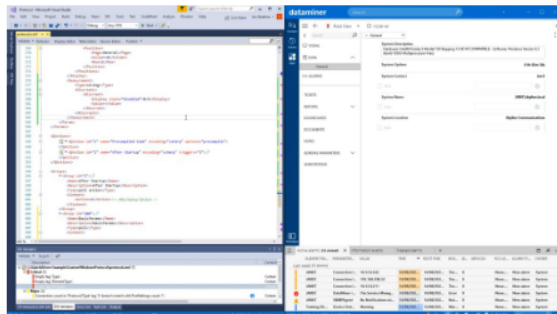
- > Technical Information
- ▼ Tools
  - > DataMiner tools
  - ▼ Third-party tools
    - 📄 DataStax DevCenter
    - 📄 Fiddler
    - 📄 ManageEngine MIB Browser
    - 📄 MySQL Workbench
    - 📄 Postman
    - 📄 ProcDump
    - 📄 RawCap
    - 📄 SoapUI
    - 📄 TCPView
    - 📄 Visual Studio Code
    - 📄 Wireshark
- 🔗 Online DataMiner Systems
- 🔍 Skylicons

Collapse Articles



# Expert Hubs

- DataMiner technology architecture, Integration Studio, Visual Overview, Automation / SRM
- Hot industry technology topics security, SMPTE-2110 & NMOS, CI/CD, DOCSIS 3.1, DAA, PTP, CIN, Agile
- Business topics key requirements, ROI, etc.



## DataMiner Integration Studio

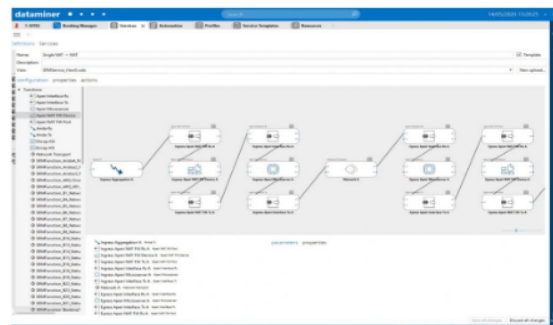
DataMiner Integration Studio (DIS) is the Integrated Development Environment (IDE) for data integration engineers to develop, test and deploy new product integrations for the DataMiner platform.

[GO TO THE HUB](#)

## DataMiner Service & Resource Management

DataMiner Service & Resource Manager (SRM) is the DataMiner solution framework to design sophisticated end-to-end orchestration solutions.

[GO TO THE HUB](#)



Questions - DataMiner Dojo

community.dataminer.services/questions/

dataminer **dojo** the smart community

Search community.dataminer.services

BLOG QUESTIONS LEARNING RESOURCES AGILE EXPERT HUBS DISCOVER MORE

>> GO TO DATAMINER CLOUD SERVICES

# QUESTIONS

share your use cases or discuss best practices for managing any media & broadband platform

The Dojo community welcomes any questions related to DataMiner features and capabilities (users/admins/developers), integrations with third-party products and the use of those, as well as more general industry questions related to monitoring & orchestration, typical use cases and workflows, general ICT technology (e.g. Kubernetes, LLDP, etc.), best practices (e.g. CIN management, security, etc.), methodologies & concepts (e.g. Agile operation, CI/CD), strategies, standards (e.g. NMOS, SNMP, ST2110, DOCSIS3.1, OpenConfig, etc.), etc. If you have a suggestion for a new feature, you can [add it here](#). Also, please take a minute to [read our community guidelines](#).

ASK QUESTION MY QUESTIONS

Search questions... SEARCH

Order By: New Tag Clear Filter

0 votes	1 ans	Using regex with in Visio shape data	26 views	Toon Castele [ISAC] Answered question 3 hours ago	Visio
0 votes	1 ans	PRTG graphs to Dataminer	31 views	Jens Gellynck [ISAC] Answered question 3 hours ago	
1 votes	1 ans	Reducing load when using element subscriptions	29 views	Michiel Saelen [ISAC] Posted new comment 8 hours ago	subscriptions
0 votes	1 ans	DM + SRM upgrade without middle step	46 views	Matthijs Favore [ISAC] Selected answer as best 19 hours ago	SRM upgrade upgrade package
0 votes	1 ans	Re-install Taskbar Utility	52 views	Koen Bouckhout [ISAC] Selected answer as best 24 hours ago	SLTaskbarUtility
6 votes	3 ans	Best practice to store API credentials used in Automation script?	158 views	Ruben Vandepitte [ISAC] Posted new comment 19 hours ago	API Automation security
0 votes	0 ans	Dashboard Pivot Table Conditions	42 views	Randy Uhenes [ISAC] Changed status to publish 1 day ago	

Question Tag Cloud

Alarm Console (37) alarms (44) alarm template (30) API (22) authentication (21)

Automation (76) automation script (26) Automation script (47) backup (42) booking (20) Cassandra (91) cluster (22) Correlation (27) Cube (72)

Dashboard (52) Dashboards (90) database (49) DataMiner Cube (22) DCF (26) DIS (27) DMS (28) driver (30) DVE (33) Elastic (44) Elasticsearch (55) elements (28) Failover (67) HTTP (26) IDP (27) logging (22) MySQL (28)

protocol (95) qAction (36) Reports (20) resources (25) security (51) services (20) SUNet (19) SNMP (38) SRM (169) timeout (24) trending (50) upgrade (38) Visio (268)

Visual Overview (235)

# Questions

- Share knowledge & expertise on the fly
- Get the right information straight from the experts
- Used by the entire Skyline community
- Interact with the entire global community

Courses - DataMiner Dojo

community.dataminer.services/learning/courses/

dataminer  
dojo  
the smart community


Search community.dataminer.services

BLOG QUESTIONS LEARNING RESOURCES AGILE EXPERT HUBS DISCOVER MORE >> GO TO DATAMINER CLOUD SERVICES

## COURSES

develop and improve your DataMiner skills and learn about a wide variety of topics to stay ahead

Knowledge is power, even more so when it comes to DataMiner: there's pretty much nothing that cannot be done with its unique features, capabilities and conceptual architecture. DataMiner is like the gift that keeps on giving.



### Free Self-Paced Training

We believe in empowering people, because maximum agility can only be achieved when people are empowered with the tools to evolve continuously. That's exactly why DataMiner is the key asset for so many organizations. Therefore, all official Skyline training materials\* are available here in the Dojo Learning section, **free of charge**.

\*Note that as we add new training modules whenever new features get released, some features discussed in the training modules may rely on a more recent version of DataMiner than the one you are currently using.

<h4>DataMiner Foundational</h4> <a href="#">VIEW COURSES</a>	<h4>Data Acquisition &amp; Control Plane</h4> <a href="#">VIEW COURSES</a>	<h4>Orchestration &amp; Automation</h4> <a href="#">VIEW COURSES</a>
<h4>Cloud Services</h4> <a href="#">VIEW COURSES</a>	<h4>Apps &amp; Solutions</h4> <a href="#">COMING SOON</a>	<h4>Visualization</h4> <a href="#">VIEW COURSES</a>
<h4>Other</h4>		

# Learning

- With the proper knowledge, DataMiner is the gift that keeps on giving
- Training is made available free of charge via DataMiner Dojo
- Learn at your own pace, and focus on the subjects that matter most
- Various new in-depth expert modules Dashboards, Visual Overview, Automation, Service & Resource Management, connector development, etc.
- Incremental Quick Update training sessions

Certification - DataMiner Dojo

community.dataminer.services/learning/certification/

dataminer  
dojo  
the experts  
community

Search community.dataminer.services

BLOG QUESTIONS LEARNING RESOURCES AGILE EXPERT HUBS DISCOVER MORE >> GO TO DATAMINER CLOUD SERVICES

## CERTIFICATION OF EXPERTISE

get your DataMiner skills and knowledge certified through our official certificates

The DataMiner Certification Program offers a broad range of certification services that enable people in all types of roles, ranging from entry-level to advanced knowledge, to get the maximum out of a DataMiner System.

Acquiring this type of certificate requires the individual to pass the associated certification program, which typically consists of a series of hands-on exercises, verbal and written examinations, and a thorough final evaluation.

### DATAMINER FOUNDATIONAL

From using DataMiner for day-to-day operations to setting up and maintaining DataMiner Systems, the DataMiner Foundational certification programs will make you a DataMiner Operator and Administrator expert and give you the foundation you need to follow more specialized certification programs.

#### DataMiner Operator

This certification is intended for **DataMiner Operator Experts** who handle **day-to-day operations** in the DataMiner software.

[more info](#)

#### DataMiner Administrator

Intended for DataMiner users who **set up and maintain DataMiner Systems**, including adding new devices and new drivers, managing user accounts, setting up backup policies, creating Visual Overview pages, defining alarm thresholds, and much more.

[more info](#)

### DATAMINER DESIGNER

Learn to visualize your data and operate your system in a more graphical way with Visual Overview and the Dashboards module, and become a DataMiner Designer expert with these certification programs.

### DATAMINER DEVELOPER

COMING SOON

Learn how to create integrations with any type of data source from any vendor, whether it is an industry-standard interface or a proprietary interface. Interaction with other DataMiner

# Certification

- Knowledge is power, and essential to get the maximum out of your DataMiner System
- Enable continuous evolution and innovation & establish an agile operation
- High-end one-on-one professional certification
- Optional paid service

# Cloud Connection

Technical aspects of the connection to the DCP



# Cloud Connection

## Organization and DataMiner System in the Cloud

Organization



Ziine



Ziine-Staging



Ziine-Dev

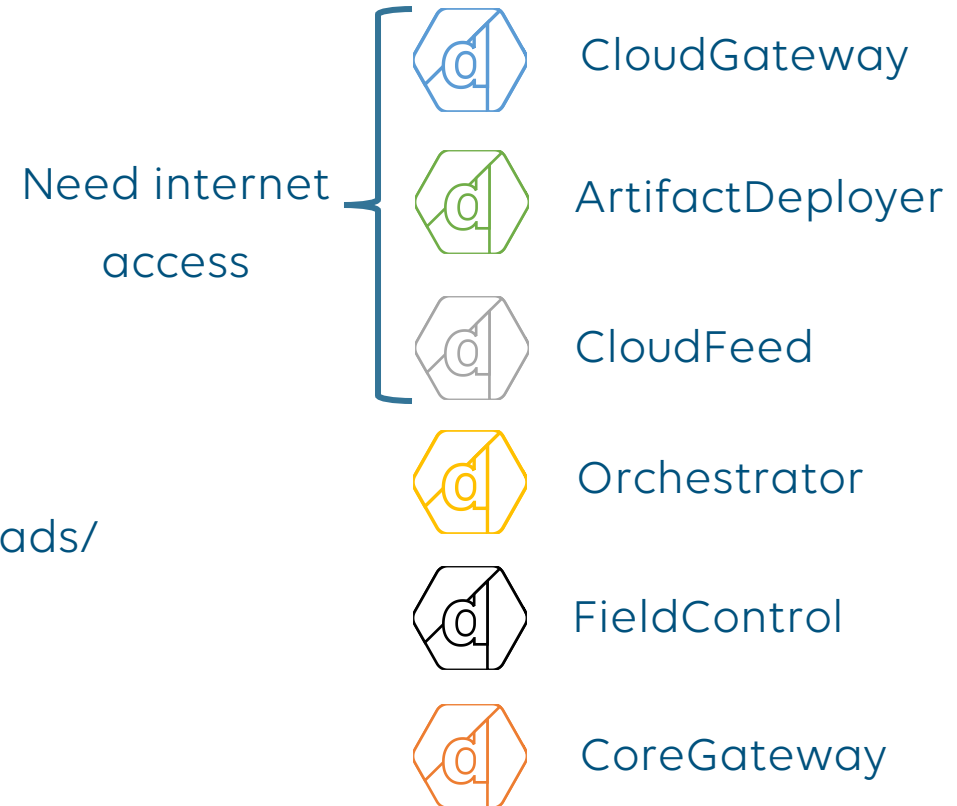
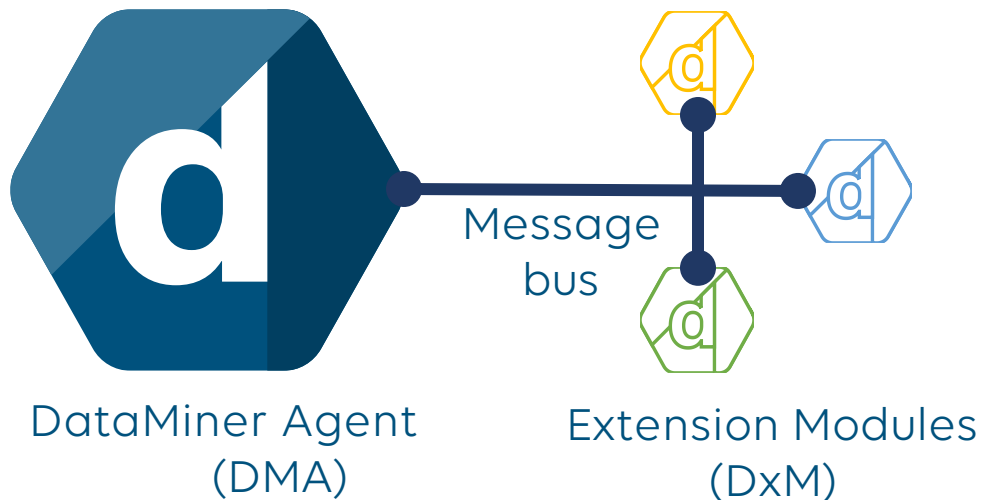


Ziine

# Cloud Connection

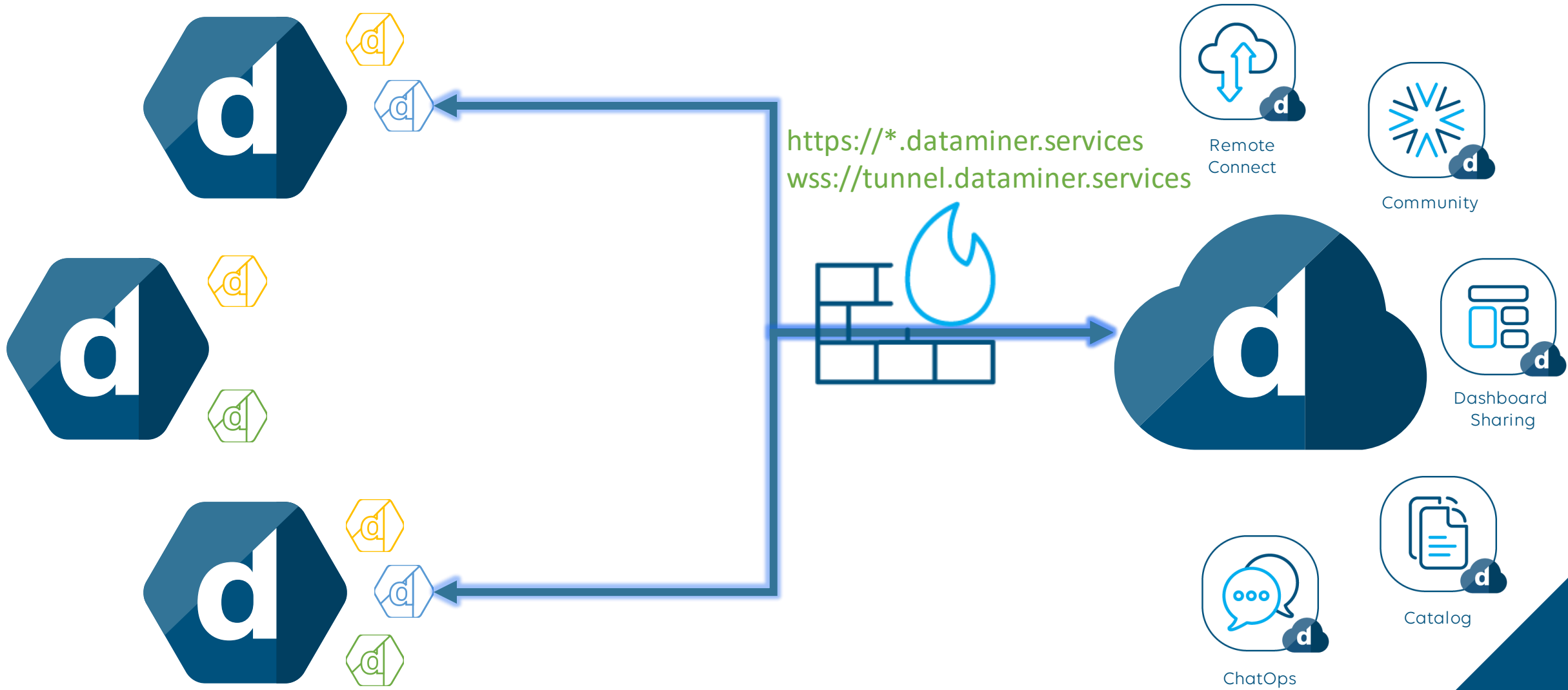
## Extension Modules

- Requires at least 10.2
- Small extra processes
- On the fly updates
- Extra functionality
- <https://community.dataminer.services/downloads/>



# Cloud Connection

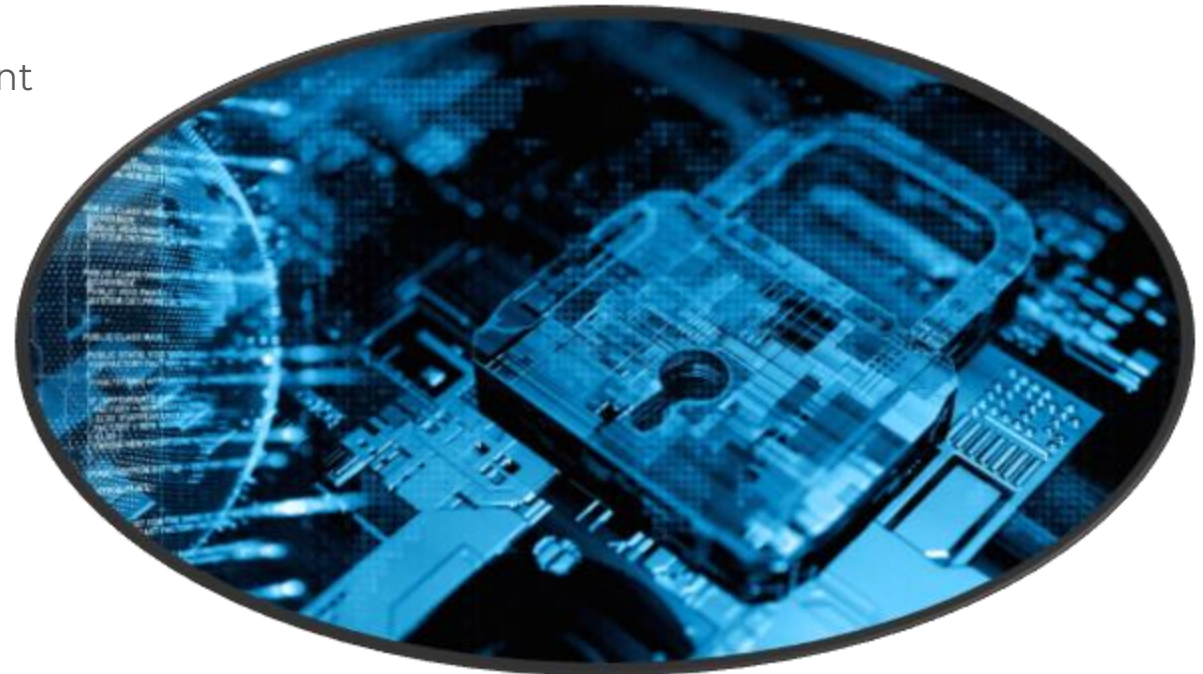
## Cluster Architecture



# Cloud Connection

## Security

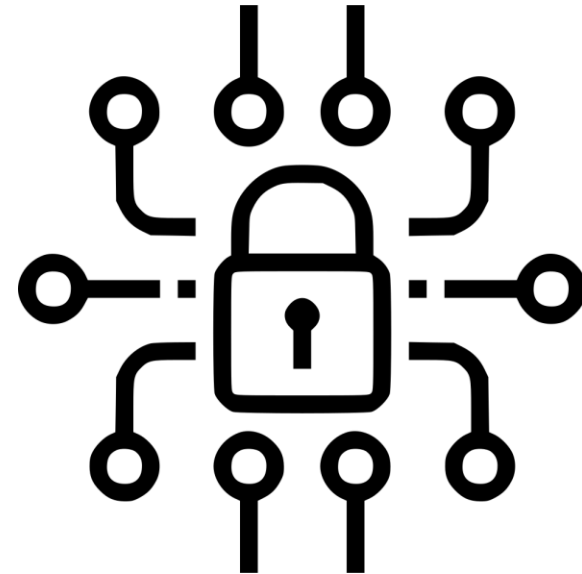
- Top priority
- Security by design
  - Linking between DataMiner account and DCP account
  - Authentication (B2C) and Authorization on all calls
  - WAF
- Security by tech
  - Data encryption
  - Integration with Azure B2C
  - Data backup strategy
  - Use of secure managed services in Azure



# Cloud Connection

## User roles and security - Organization

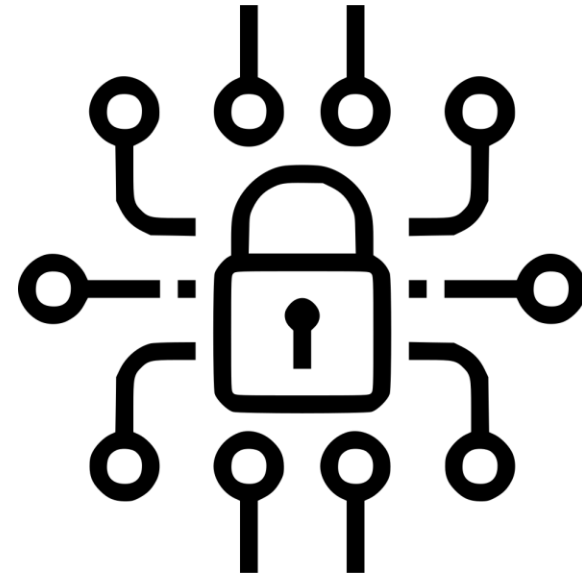
- Owner:
  - All permissions
- Admin:
  - Remove systems
  - Create, update and delete users
- Member:
  - Add systems
  - View users



# Cloud Connection

## User roles and security – DataMiner System

- Owner:
  - Request DCP tokens
- Admin:
  - Create, update and delete users
  - Unlink accounts
  - Manage system configuration
- Member:
  - Create shares
  - View system configuration



# How to connect to the DCP

Getting the system connected

# Account Linking

Unified security between DCP and DataMiner



# Account Linking

## Overview

- Prove DataMiner Identity
- Allows actions from the DCP
  - Create and update shares
  - Bot commands
  - Remote Access auto login



DCP Account



DataMiner Account



# Account Linking

## Hands-on

- Go to <https://dataminer.services>
- Select correct organization: "Inspire"
- Find Cloud Connected DataMiner system: "redroom"
- Login on the DataMiner agent
- Confirm account linking

### Apps




Install DataMiner Cube ▾

-  Collaboration
-  Catalog
-  Sharing
-  Community
-  DCP Admin
-  More apps will follow

### DataMiner Systems

**redroom**  
<https://redroom-inspire.on.dataminer.services/>

[Link account](#)

-  Home
-  Monitoring
-  DCP Admin

1 Start ..... 2 Log on ..... 3 Overview ..... 4 Done

Link your DCP account with your DataMiner account



Inspire  
Organization



**baptiste.pattyn@skyline.be**  
DCP account



**redroom**  
DataMiner System  
*Not logged in*  
DataMiner account

→ Continue to log on

✓ Start ..... 2 Log on ..... 3 Overview ..... 4 Done

## Login with your DataMiner account

Log in as 'Other user'

Other user

SKYLINE2\BaptistePA

.....



Keep me logged in

Log on

✓ Start ..... ✓ Log on ..... **3** Overview ..... 4 Done

Link your DCP account with your DataMiner account



**Inspire**  
Organization



**baptiste.pattyn@skyline.be**  
DCP account



**redroom**  
DataMiner System  
**SKYLINE2\BaptistePA**  
DataMiner account

Logout

Link accounts

✓ Start ..... ✓ Log on ..... ✓ Overview ..... **4** Done

---

Your accounts were successfully linked

Open the app where you came from to continue where you left off.

# Admin App

Manage your Cloud Connected systems





Organization

Overview

Users

DataMiner Systems

redroom <

# Inspire

Name

**Inspire**

Uri

<https://inspire.on.dataminer.services>

## Verification ⓘ

Verification status:

**Not verified**

[Request verification](#)

## License ⓘ

Name

**Essential Tier**

Description

**This is the license tier that allows 10 shares per organization. This license tier is the default one.**

Concurrent shares ⓘ

**0/10**

Organization

Overview

Users

DataMiner Systems

redroom



# Inspire

Name

Inspire

Uri

<https://inspire.on.dataminer.services>

## Verification ⓘ

Verification status:

Not verified

Request verification

## License ⓘ

Name

Essential Tier

Description

This is the license tier that allows 10 sha

Concurrent shares ⓘ

0/10

# Change organization

Cisco

<https://cisco.on.dataminer.services>

Inspire

<https://inspire.on.dataminer.services>

Kronos

<https://kronos.on.dataminer.services>

Skyline Communications

<https://skyline.on.dataminer.services>

Skyline Communications Development

<https://skylinedevelopment.on.dataminer.services>

Ziine

<https://ziine.on.dataminer.services>

Organization

Overview

Users

DataMiner Systems

redroom



# Inspire

Name

Inspire

Url

https://inspire.on.dataminer.services

## Verification ⓘ

Verification status:

Not verified

Request verification

## License ⓘ

Name

Essential Tier

Description

This is the license tier that allows 10 shares per organization. This license tier is the default one.

Concurrent shares ⓘ

0/10

Organization

Overview

Users

DataMiner Systems

redroom



Overview

Users

Nodes

Keys

Deployments

Outgoing Shares

# Inspire

Name

Inspire

Url

https://inspire.on.dataminer.services

## Verification ⓘ

Verification status:

Not verified

Request verification

## License ⓘ

Name

Essential Tier

Description

This is the license tier that allows 10 shares per organization. This license tier is the default one.

Concurrent shares ⓘ

0/10

Organization

Overview

Users

DataMiner Systems

redroom

Overview

Users

Nodes

Keys

Deployments

Outgoing Shares

Edit

# redroom

Name

redroom

Uri

<https://redroom-inspire.on.dataminer.services>

Remote access

On

Allow CloudFeed Data offload

On

Organization

Overview

Users

DataMiner Systems

redroom

Overview

Users





Nodes

Keys

Deployments

Outgoing Shares

+ Add User

Email	Role	DataMiner User	
baptiste.pattyn@skyline.be	Owner	SKYLINE2\BaptistePA	 
guillaume.van.den.berghe@skyline.be	Member		
sven.dedeene@skyline.be	Admin		

## Organization

Overview

Users

## DataMiner Systems

redroom

Overview

Users

Nodes

Keys

Deployments

Outgoing Shares

Refresh

Node: SLC-H74-G01 ×

Install latest available versions

DataMiner Extension Module	Current Version	Available Versions	
DataMiner APIGateway	0.0.1.20379		
DataMiner ArtifactDeployer	1.2.1.17365	1.3.0.21652 ▾	Upgrade
DataMiner CloudFeed	1.0.1.14672	1.0.1.14672 ▾	
DataMiner CloudGateway	2.5.2.17367	2.5.2.17367 ▾	
DataMiner CoreGateway	2.7.0.14856	2.10.0.23603 ▾	Upgrade
DataMiner FieldControl	2.6.0.14854	2.7.0.23566 ▾	Upgrade
DataMiner Orchestrator	1.2.1.17366	1.2.3.22533 ▾	Upgrade



Organization

Overview

Users

DataMiner Systems

redroom



Overview

Users





Nodes

Keys

Deployments

Outgoing Shares

+ New Key

Label	Primary Key	Secondary Key
workshop-deploy	*****  	*****   



Organization

Overview

Users

DataMiner Systems

redroom

Overview

Users

Nodes

Keys

Deployments

Outgoing Shares

Refresh


Artifact	Deployed By	State
CoreGateway DataMiner Extension Module	baptiste.pattyn@skyline.be 2022-06-16T21:36:40.6196664Z	Succeeded
CoreGateway DataMiner Extension Module	baptiste.pattyn@skyline.be 2022-06-16T21:36:38.7803895Z	Succeeded
FieldControl DataMiner Extension Module	baptiste.pattyn@skyline.be 2022-06-16T21:36:36.4908099Z	Succeeded
CoreGateway DataMiner Extension Module	baptiste.pattyn@skyline.be 2022-06-16T21:36:34.197516Z	Succeeded
Microsoft Platform Protocol	baptiste.pattyn@skyline.be 2022-06-16T21:36:21.612898Z	Succeeded
Skyline PTP Protocol	baptiste.pattyn@skyline.be 2022-06-16T21:35:36.3124557Z	Error
Skyline CDMR LogCollector Protocol	baptiste.pattyn@skyline.be 2022-06-16T21:34:25.4879515Z	Succeeded
Microsoft Platform Protocol	baptiste.pattyn@skyline.be 2022-06-16T21:33:35.7207003Z	Error

Organization

Overview

Users

DataMiner Systems

redroom 

Overview

Users

Nodes

Keys

Deployments

Outgoing Shares

Name	Shared With	Shared By
Cooling	guillaume.van.den.berghe@skyline.be	baptiste.pattyn@skyline.be June 17, 2022 at 8:00:58 AM GMT+2
NOC overview	baptiste.pattyn@skyline.be, guillaume.van.den.berghe@skyline.be,...	baptiste.pattyn@skyline.be June 17, 2022 at 8:23:17 AM GMT+2
Power Consumption	jordy.ampe@skyline.be, sven.dedeene@skyline.be, pattyn-baptist...	baptiste.pattyn@skyline.be June 17, 2022 at 8:24:14 AM GMT+2
Server Racks	baptiste.pattyn@skyline.be, guillaume.van.den.berghe@skyline.be	baptiste.pattyn@skyline.be June 17, 2022 at 8:25:11 AM GMT+2

# Catalog













**Collection of all available connectors for DataMiner**


decoder

# Catalog


## Deploy connectors to your Cloud Connected System

- Easily search and download 7000+ connectors
- Automatically deploy connectors to your Cloud Connected System

-  **Harris NetVX Decoder**  
Driver - Decoder
-  **AppearTV Decoder DDBB**  
Driver - Decoder
-  **AppearTV Decoder-Synchronizer**  
Driver - Decoder
-  **Generic Edge Decoder**  
Driver - Decoder
-  **Harmonic RD9000 Decoder**  
Driver - Decoder
-  **Aperi H264 Decoder**  
Driver - Decoder
-  **Aperi J2K Decoder**  
Driver - Decoder
-  **Haivision Makito X Decoder**  
Driver - Decoder
-  **Ateme Titan Edge - Decoder**  
Driver - Decoder
-  **Nevision Virtuoso XS Decoder**  
Driver - Decoder
-  **Kirnexus EDBoX 1000 decoder**  
Driver - Decoder
-  **Evertz 7880DM4-ISDBT-IP - Decoder**  
Driver - Decoder





dataminer | CATALOG Ziine | 

< back



**Microsoft Platform**

Information Platform   Microsoft

PUBLISHER	INSTALLATIONS	PROTOCOL	
 Skyline	 169	 Serial	 <b>Deploy</b>

[show more](#)


# Deploy connector to system

## Hands-on

- Go to <https://catalog.dataminer.services>
- Select a connector
- Click on "Deploy"
- Select the target DMS: "redroom"
- Deploy the connector




## Catalog


[Browse packages](#) [My private packages](#)

microsoft platform 


[Browse packages](#) [My private packages](#)




**Microsoft Platform**  
Driver - Information Platform




**Microsoft Platform [Ziine]**  
Visio




**Microsoft Divitech Platform**  
Driver - Information Platform




**Microsoft Platform SNMP**  
Driver - Information Platform




**Ateme AMS - Microsoft Platform**  
Driver - Element Manager



**Microsoft Hyper-V**  
Driver - Platform



**Microsoft Azure - Disks**  
Driver - Monitoring Platform



**Microsoft Azure - Kubernetes Services**  
Driver - Monitoring Platform



< back



# Microsoft Platform

Information Platform

Microsoft

PUBLISHER  
Skyline

INSTALLATIONS  
169

PROTOCOL  
Serial



show more

## New

Version history

Add auto-deletion on Event log table.

5.0.0.2

## Information

### Microsoft Platform

With the Microsoft Platform driver, it is possible to monitor a Microsoft server.

#### About

The Microsoft Platform driver retrieves basic information from a Microsoft server. Extra information can be enabled or disabled, e.g. Task Manager, Service List, etc.

On the Task Manager page, a button allows you to normalize alarms in order to set the current values as normal.

#### Ranges of the driver

Driver Range	Description	DCF	Cassandra
1.0.0.x [obsolete]	Microsoft WMI interface implementation.	Yes	Yes
1.1.0.x	Microsoft WMI interface implementation.	Yes	No
1.1.1.x [move to 1.1.2.x]	Branched from 1.1.0.89: Microsoft WMI interface + interface for DELL- and HP-specific SNMP parameters.	Yes	Yes
1.1.2.x [SLC Main - Physical Hardware Environment]	Branched from 1.1.1.x: Microsoft WMI interface + interface for DELL- and HP-specific SNMP parameters.	Yes	Yes
1.1.3.x [SLC Main - Virtual Machine Environment]	Branched from 1.1.0.97: contains partitionedTrending database option. Difference between 1.1.3.x and 1.1.0.x branch will not be noticeable on local Cassandra DB, only on local MySQL DB.	Yes	Yes

show more

Version history is not available for this driver.



< back



## Microsoft Platform

Information Platform Microsoft

PUBLISHER  
Skyline

INSTALLATIONS  
169

PROTOCOL  
Serial

 Deploy

show more

### New

Add auto-de

### Informa

Microsoft P

With the Micr

About

The Microsoft

disabled, e.g. T

On the Task M

Ranges of the

Driver Range

1.0.0.x [obsole

1.1.0.x

1.1.1.x [move t

1.1.2.x [SLC M

Environment]

### Choose target DMS

redroom redroom

Deploy

< back



## Microsoft Platform

Information Platform Microsoft

PUBLISHER  
Skyline

INSTALLATIONS  
169

PROTOCOL  
Serial

Deploy

show more

### New

Add auto-de

ation history

5.0.0.2

### Informa

Microsoft PI

With the Micro

About

The Microsoft  
disabled, e.g.  
On the Task M

Ranges of the

Driver Range

1.0.0.x [obsole

1.1.0.x

1.1.1.x [move t

1.1.2.x [SLC M

Environment]

1.1.3.x [SLC Main - Virtual Machine Environment]

### Choose target DMS

redroom redroom

Deploy

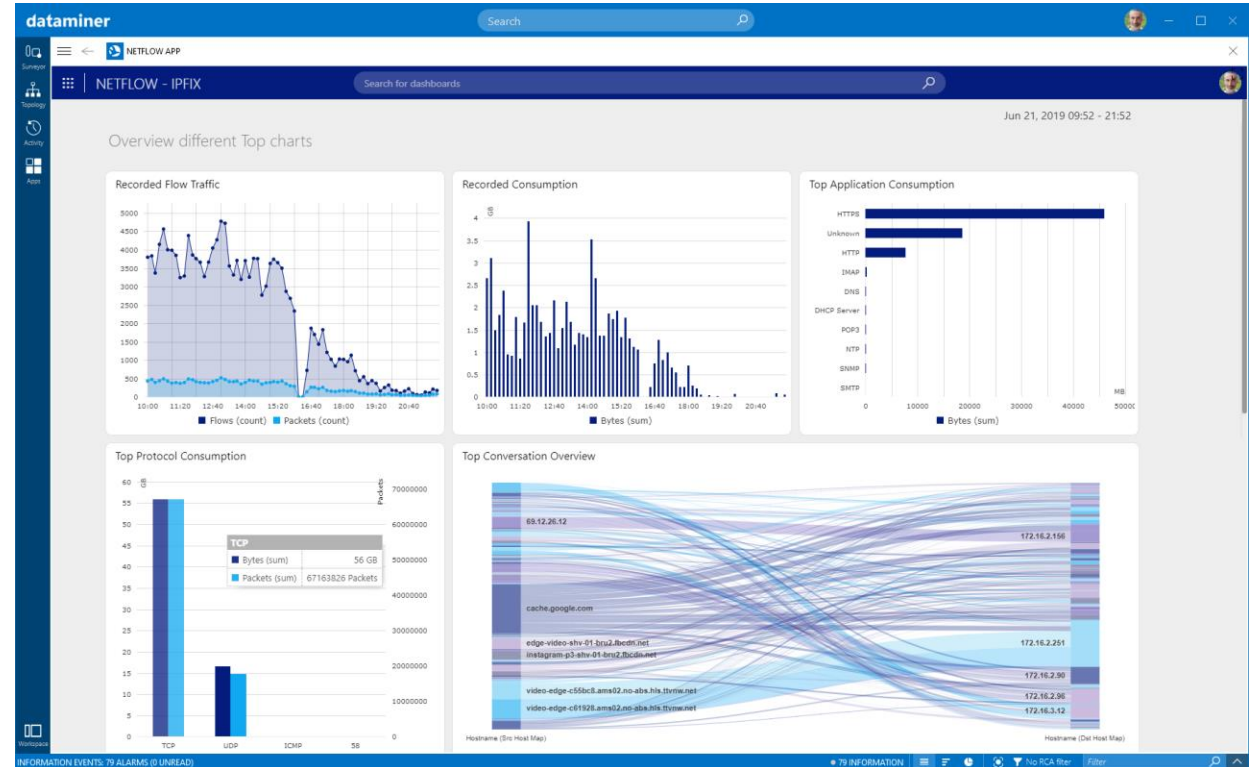
# Live Sharing Service

Easily collaborate around custom dashboards

# Live Sharing Service

## Overview

- Share live data with anybody
- Instant, effortless and on the fly
- Professionally e2e secured and scalable
- Fully integrated with DataMiner
- Supporting endless use cases
- Alternative for Dashboard Gateway



# Live Sharing Service

## Hands-on

- Go to <https://redroom-inspire.on.dataminer.services>
- Open Dashboards app
- Create share
- Go to <https://shares.dataminer.services>
- Open share
- Remove yourself from share
- Go back to <https://redroom-inspire.on.dataminer.services>
- Edit the share
- Remove the share



Hi **Baptiste Pattyn**

Join **DataMiner Dojo** to stay up to date with our community.

Search...

Recently opened Pinned +

- Cooling 25 minutes ago
- Power Consumption 25 minutes ago
- NOC overview 25 minutes ago
- Server Racks 25 minutes ago
- NOC overview 11 hours ago
- anothernewer 11 hours ago

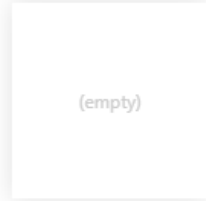




> Operations

Workshop

## Get started

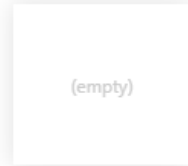


Start with a blank dashboard.



Start with an example dashboard.

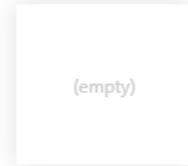
## Recent dashboards



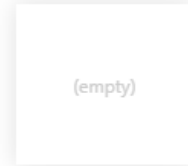
Cooling



Power Consumption



NOC overview



Server Racks

Good morning, Baptiste Pattyn ×



Operations

Workshop

Inspire

Open in new tab

Create dashboard

Import dashboard

Rename

Duplicate

Move

Delete

INSPIRE

Start editing



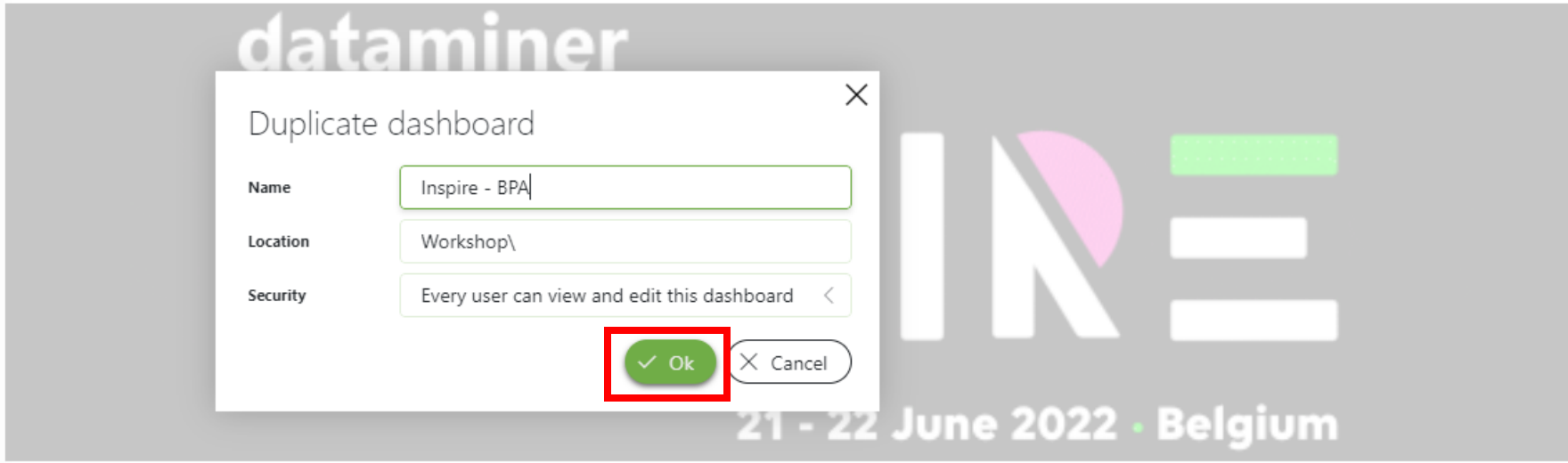




- > Operations
- ✓ Workshop
- Inspire

INSPIRE

Start editing



Duplicate dashboard

**Name** Inspire - BPA

**Location** Workshop\

**Security** Every user can view and edit this dashboard <

✓ Ok X Cancel



- Component
- DATA LAYOUT SETTINGS
- Search
- ALL AVAILABLE DATA
- BOOKINGS
  - ELEMENTS
  - FEEDS
  - INDICES
  - PARAMETERS
  - PROTOCOLS (10)
  - QUERIES
  - SPECTRUM BUFFERS
  - SPECTRUM PRESETS
  - VIEWS (1)

- Operations
- Workshop
- Inspire
- Inspire - BPA

A large banner for the 'INSPIRE' event. At the top left, the word 'dataminer' is written in white lowercase letters. Below it, the word 'INSPIRE' is written in large, bold, white uppercase letters. Each letter of 'INSPIRE' contains a colorful graphic: 'I' has a green vertical bar, 'N' has a green vertical bar, 'S' has a pink-to-white diagonal split, 'P' has a green-to-white diagonal split, 'I' has a pink-to-white diagonal split, 'R' has a pink-to-white diagonal split, and 'E' has a green horizontal bar. Below the word 'INSPIRE', the text '21 - 22 June 2022 · Belgium' is written in white.

DASHBOARDS  BP

INSPIRE - BPA Start editing Clear all Share



The main content area displays a promotional banner for the 'dataminer INSPIRE' event. The banner features the 'dataminer' logo in white on a black background. Below it, the word 'INSPIRE' is written in large, stylized letters where each letter is filled with a different color: 'I' is green, 'N' is white with a green shadow, 'S' is white with a pink shadow, 'P' is white with a green shadow, 'I' is white with a pink shadow, 'R' is white with a pink shadow, and 'E' is white with a green shadow. At the bottom of the banner, the text '21 - 22 June 2022 · Belgium' is displayed in white.

javascript:

DASHBOARDS  BP

INSPIRE - BPA Start editing

Operations  
Workshop  
Inspire  
Inspire - BPA

dataminer

How do you want to share this dashboard?

[Create cloud share](#) →  
Create a cloud share that users can visit to view a live version of your dashboard.

[URL](#)

Belgium



You are sharing: "Inspire - BPA"  
Dashboard: "Inspire - BPA"  
Folder: "Workshop"

With

baptiste.pattyn@skyline.be X

Name

Inspire - BPA

Description

This is a dashboard that I shared during the workshop at Inspire on the DataMiner Cloud Platform.



Message

Hi, I would like to share this dashboard with you.

Add expiration date

Share



## Baptiste Pattyn shared a dashboard with you

Hi, I would like to share this dashboard with you.

You now have access to the following dashboard:

### Inspire - BPA

This is a dashboard that I shared during the workshop on the Cloud Connection.

Open

DataMiner Cloud Dashboards provide instant live access to data shared with you by users of the DataMiner end-to-end network management and orchestration platform.



**dataminer**

**INSPIRE**

**21 - 22 June 2022 • Belgium**



## Shared with you



- ☁️ Decoder Racks [↗](#) ... <
- 🕒 Eurovision Topology [↗](#) ... <
- ☁️ Inspire - BPA [↗](#) ... <
- ☁️ NOC overview [↗](#) ... <
- ☁️ Server Racks [↗](#) ... <




## Shared with you



 [Decoder Racks](#) 



 [Eurovision Topology](#) 



 [Inspire - BPA](#) 



## Description


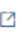
**This is a dashboard that I shared during the workshop on the Cloud Connection.**

Shared by **baptiste.pattyn@skyline.be**

Created at **Jun 17, 2022**

Organization **Inspire**

DataMiner System **redroom**


 [NOC overview](#) 



 [Server Racks](#) 



## Shared with you

[Decoder Racks](#)[Eurovision Topology](#)[Inspire - BPA](#) Remove

## Description

This is a dashboard that I shared during the workshop on the Cloud Connection.

Shared by **baptiste.pattyn@skyline.be**Created at **Jun 17, 2022**Organization **Inspire**DataMiner System **redroom**[NOC overview](#)[Server Racks](#)

## Shared with you

Decoder Racks [↗](#)Eurovision Topology [↗](#)Inspire - BPA [↗](#)

Description

This is a dashboard that I s

Shared by bapti

Organization Inspi

DataMiner System redro

## Delete incoming share

Are you sure you want to delete the incoming share **Inspire - BPA**?  
Once the incoming share has been removed, you will not be able to see it until someone shares it with you again.

Remove

NOC overview [↗](#)Server Racks [↗](#)

## Shared with you



 [Decoder Racks](#) 



 [Eurovision Topology](#) 




 [NOC overview](#) 



 [Server Racks](#) 



 Share removed 

The incoming share has been removed successfully.



Operations

Workshop

Inspire - BPA

Inspire

INSPIRE - BPA

Start editing



dataminer

INSPIRE

21 - 22 June 2022 · Belgium



Operations

Workshop

Inspire - BPA

Inspire

INSPIRE - BPA

Start editing

dataminer



How do you want to share this dashboard?

Manage cloud share

Manage or delete an existing cloud share of your dashboard.



URL

Belgium



You are sharing: "Inspire - BPA"  
Folder: "Workshop"

With

Name

Description

This is a dashboard that I shared during the workshop on the Cloud Connection.

Message

Hi, I would like to share this dashboard with you.

Add expiration date

Delete

Update



# ChatOps

**MSTeams integration to easily integrate DataMiner data in the conversation.**

Hi, welcome to the DataMiner bot! 🌟

I hope you are having a great day today!



You can use this bot in any conversation to execute actions straight to your cloud-connected DataMiner System.

For example, type **show alarms** to make me show you your active alarms, or use the **show elements** command to see your elements.

Of course, there is much more I can do for you. You can ask me for more **help** whenever you want.

- [Learn more about the bot](#)
- [Learn more about DataMiner](#)

8:32 AM  
Show DMS

**d** DataMiner 8:32 AM

### Your active DataMiner System

Organization: **Ziine**  
DataMiner System: **Ziine-Dev**

If you ask me something, I will use this DataMiner System to fulfill your request.

- [Change DMS](#)
- [Learn more](#)

8:33 AM  
Show Alarms

**d** DataMiner 8:33 AM

I've found 209 active alarms in the DataMiner System **Ziine-Dev**, with the 10 most recent ones listed below. You can view all your alarms via [Remote Access](#).

Alarm on Application Gateways\_DataMiner Services-rg-dcp-api-qa  
Open alarm. New alarm.

Severity: Timeout  
Parameter: Communication state  
Value: Not Responding  
DataMiner Time: 6/21/2022 6:32:57 AM +00:00  
Your Time: 6/21/2022 8:32 AM



- [Open](#)
- [Element](#)





Guillaume Van den Berghe 8:38 AM  
Let's check upon the operations view.

[DataMiner](#) Show view Operations



DataMiner 8:38 AM  
[Guillaume Van den Berghe](#), I've found the view **Operations** in the DataMiner System **Ziine-Dev**:

### Operations





WELCOME



Alarm Level: Critical

Alarms: 44

[Open](#)

[Alarms](#)

8:42 AM

I have an idea where the problem might be...

[DataMiner show element sla\\_olympics](#)

Last read



DataMiner 8:43 AM

**Baptiste Pattyn**, I've found an element in the DataMiner System **Ziine-Dev**:



Element SLA\_OLYMPICS-OFFAIR

The element is Active.

Alarm Level: Critical

Alarms: 37

[Open](#)

[Alarms](#)

8:43 AM

Yes lot's of alarms here [Guillaume Van den Berghe...](#)

Let's check which bookings could be impacted by this.

[DataMiner run getbookings](#)



DataMiner 8:43 AM

Baptiste Pattyn, I'm going to run **getbookings** in the DataMiner System Ziine-Dev...

Edited

Command getbookings

State: Succeeded

Output:

Id: 9ab8bcec-8cfd-4369-90e8-7725254ea7b0  
Name: SLC PLM Start Process  
Start: 20/06/2022 15:02:18  
End: 3/07/2022 15:18:18

Id: 56939222-2bb0-47ef-88a7-f45c9a474b52  
Name: Mundialito\_100108  
Start: 21/06/2022 5:42:30  
End: 21/06/2022 7:19:10

Id: f5d9a536-3509-4e7c-b4f4-b5cbf6af3f10  
Name: Wimbledon Tennis\_100336\_IP Network  
Start: 21/06/2022 5:05:30  
End: 21/06/2022 6:47:10

Id: 5aa07198-b1b3-4e83-bc3d-6ef0a137e635  
Name: VFF Cup\_100443  
Start: 21/06/2022 6:19:30  
End: 21/06/2022 7:08:10

Id: 4fa4947c-4399-4ac5-9c24-7e57898f5fa2  
Name: Elton John, Farewell Yellow Brick Road Tour\_100604\_IP Network  
Start: 21/06/2022 6:34:30  
End: 21/06/2022 8:09:10

Id: 44a5c045-bb80-4533-9d4d-7f6d7236b395  
Name: Elton John, Farewell Yellow Brick Road Tour\_100604  
Start: 21/06/2022 6:34:30  
End: 21/06/2022 8:09:10

Id: 54c163c0-9e27-4b80-8e5f-6a06a8b937e9  
Name: SLC PLM End Process  
Start: 15/06/2022 14:52:47  
End: 3/07/2022 22:01:00

Id: 91dc1dd9-f207-4ce1-a35c-5398f4eeae06  
Name: SLC PLM Approve Process  
Start: 15/06/2022 14:51:45  
End: 3/07/2022 21:59:00

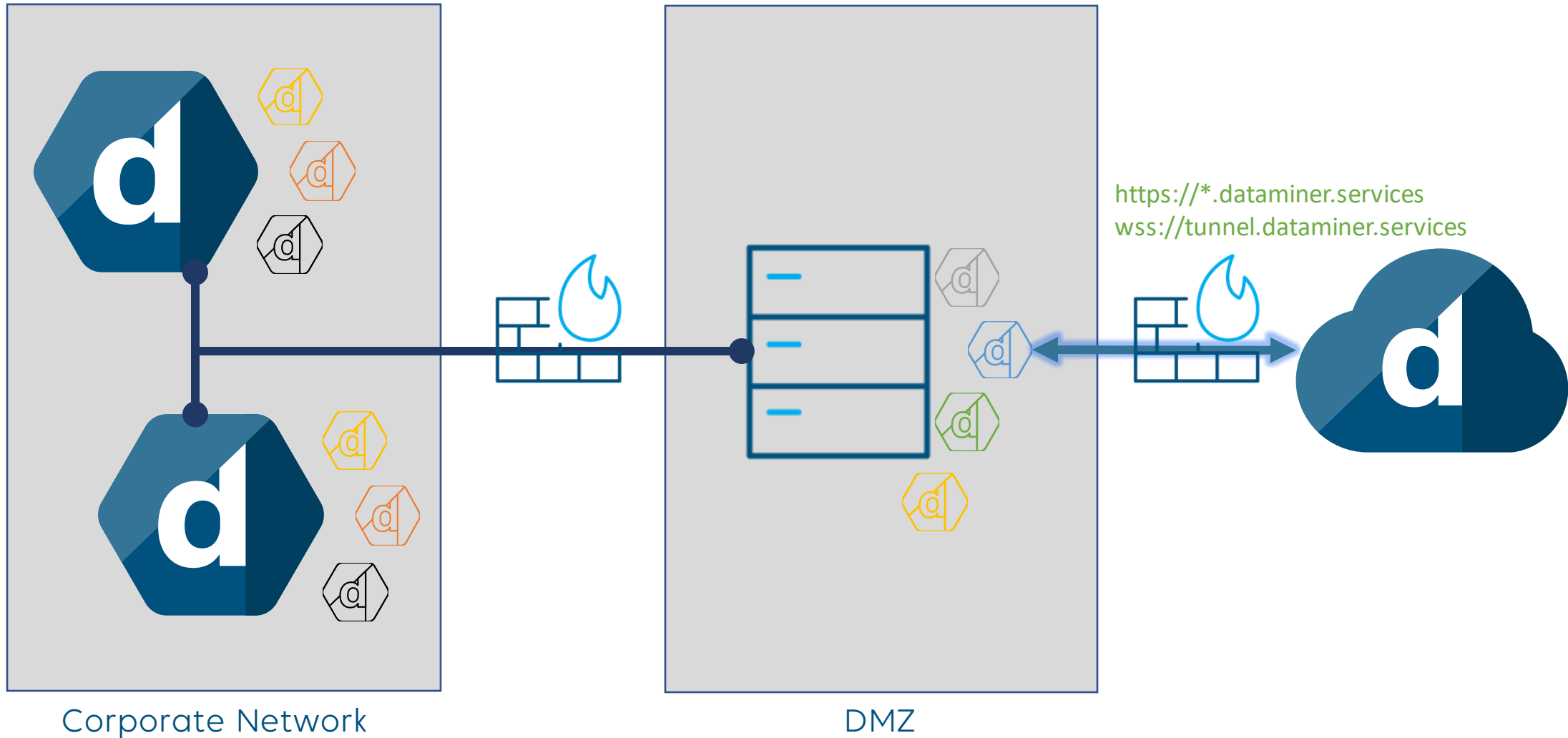
Id: a02ba430-af1a-481a-a723-8e06efde62a6  
Name: Process event 19  
Start: 17/06/2022 9:15:24  
End: 31/07/2022 9:31:24

# Look into the future

Upcoming features

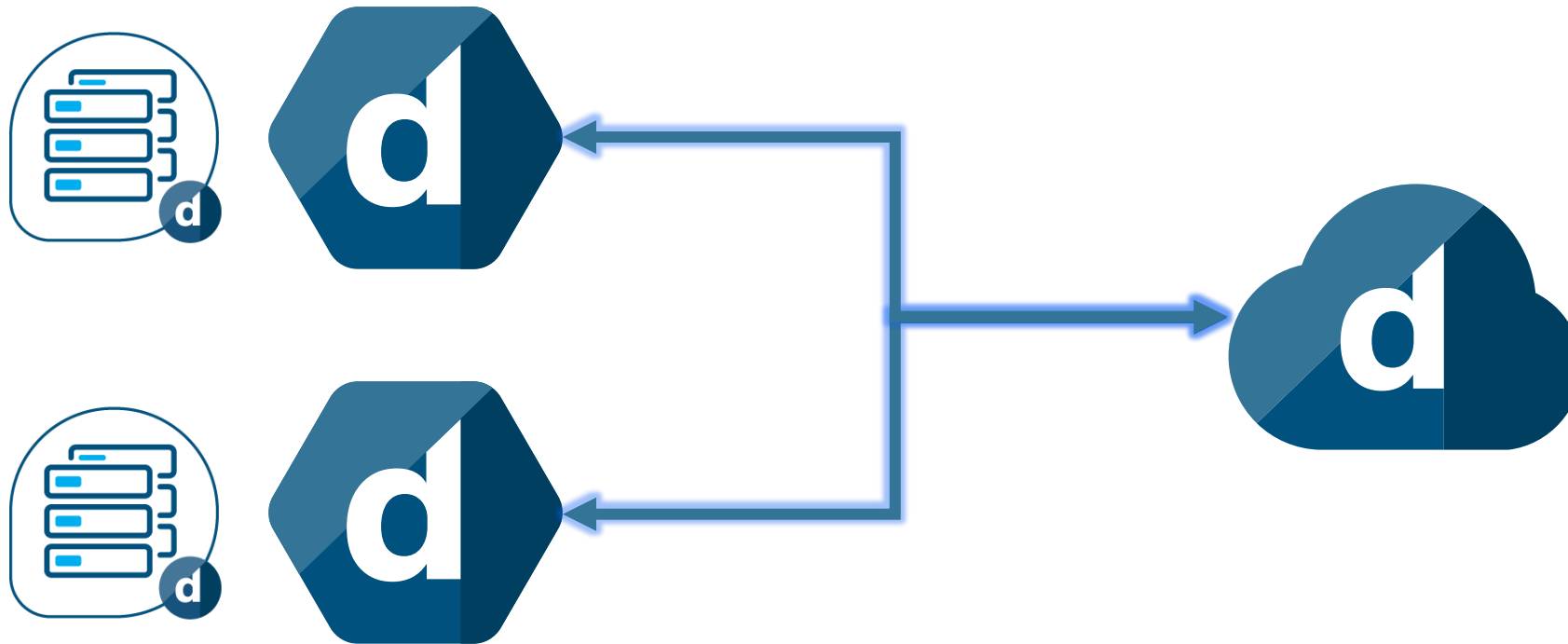
# Look into the future

## DMZ setup



# Look into the future

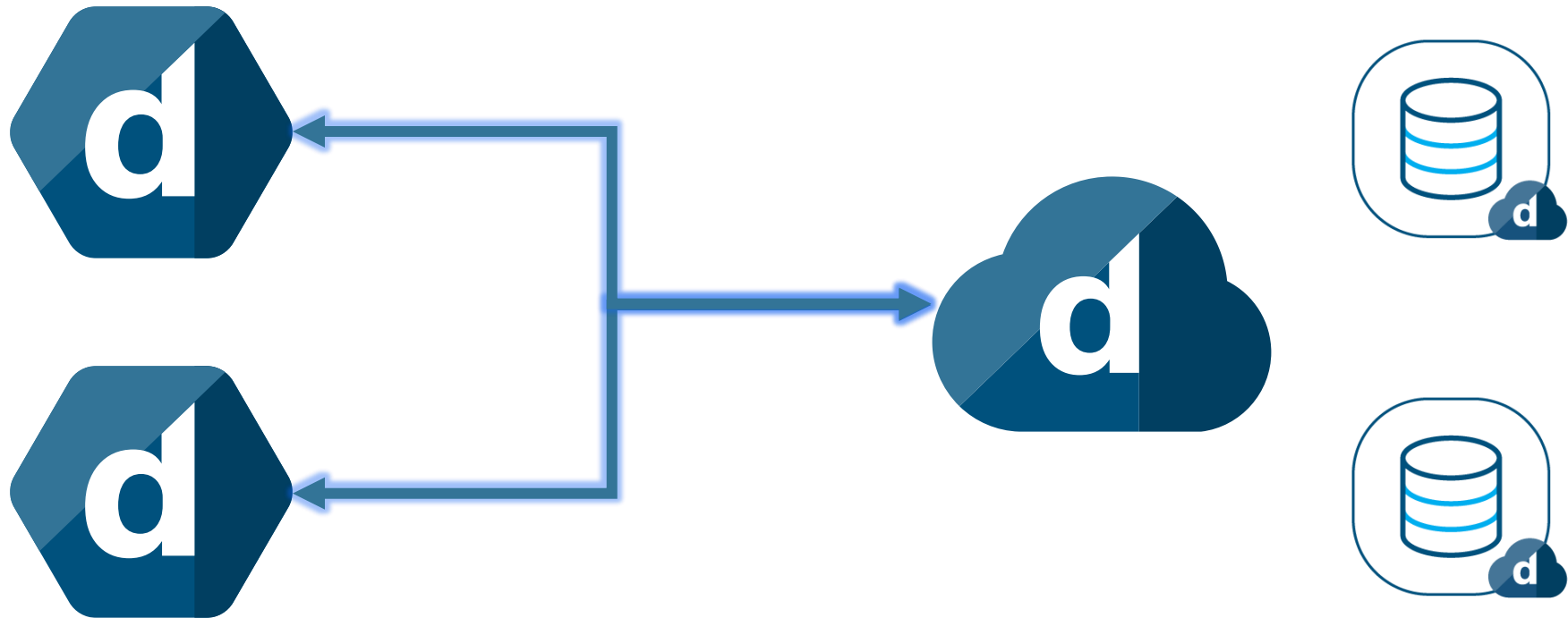
Storage as a Service





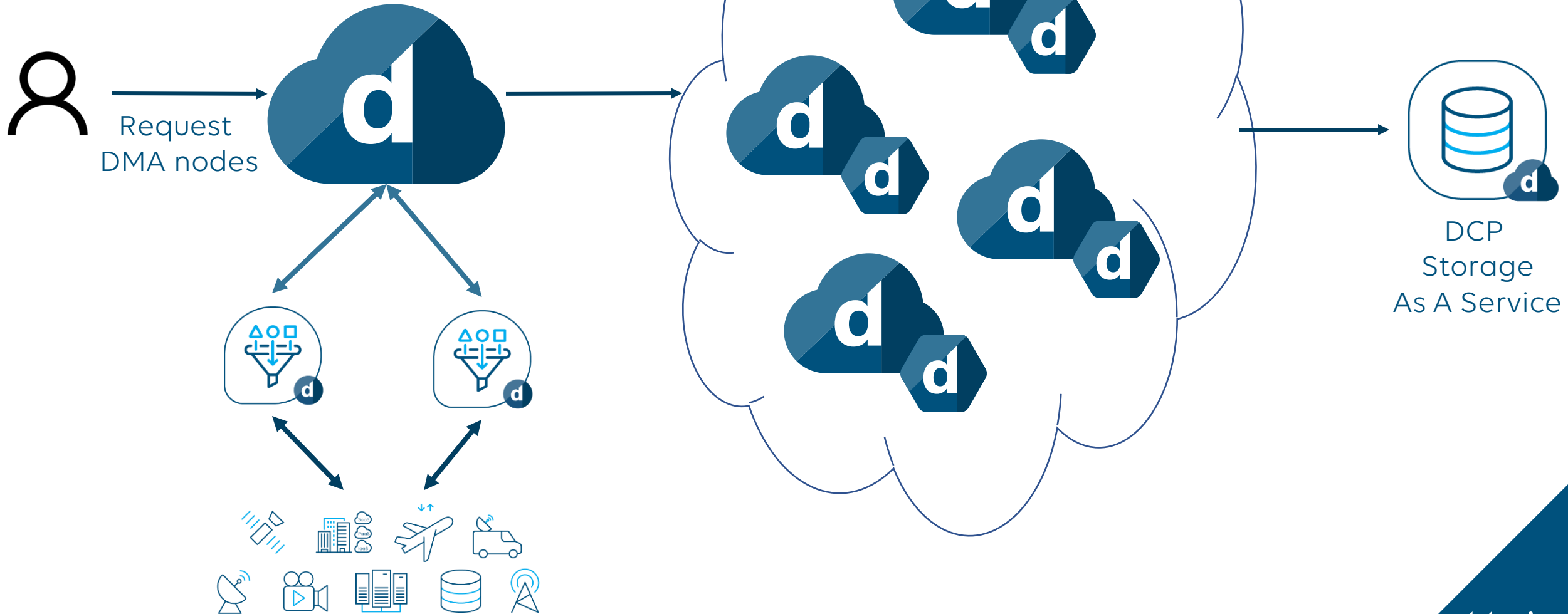
# Look into the future

Storage as a Service



# Look into the future

## DataMiner as a Service



# Look into the future

And more...



Teams  
Notifications



API  
Sharing



Slack Bot



App  
Sharing

# do you have any questions?

Please take a minute to fill in our anonymous survey sheet,  
so we can improve our future workshop sessions.

**We appreciate your feedback.**

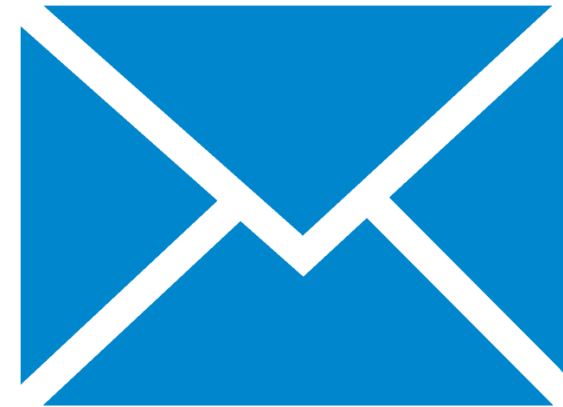
# Let's connect!



**Baptiste Pattyn**  
Product Owner Cloud at Skyline  
Communications



**OR**



**[baptiste.pattyn@skyline.be](mailto:baptiste.pattyn@skyline.be)**

# legal note

- This document, and any related materials provided with this document, is strictly confidential (and may be privileged), some data in it may be protected by intellectual property rights, and is intended for the sole use of individual – or entity – to whom it is addressed.
- Any use of the information contained herein (including, but not limited to, total or partial reproduction, or distribution in any form) by persons other than the designated recipients is prohibited.
- Note that this document may be subject to a non-disclosure agreement.
- Any questions about this legal note can be addressed to: [legal@skyline.be](mailto:legal@skyline.be)